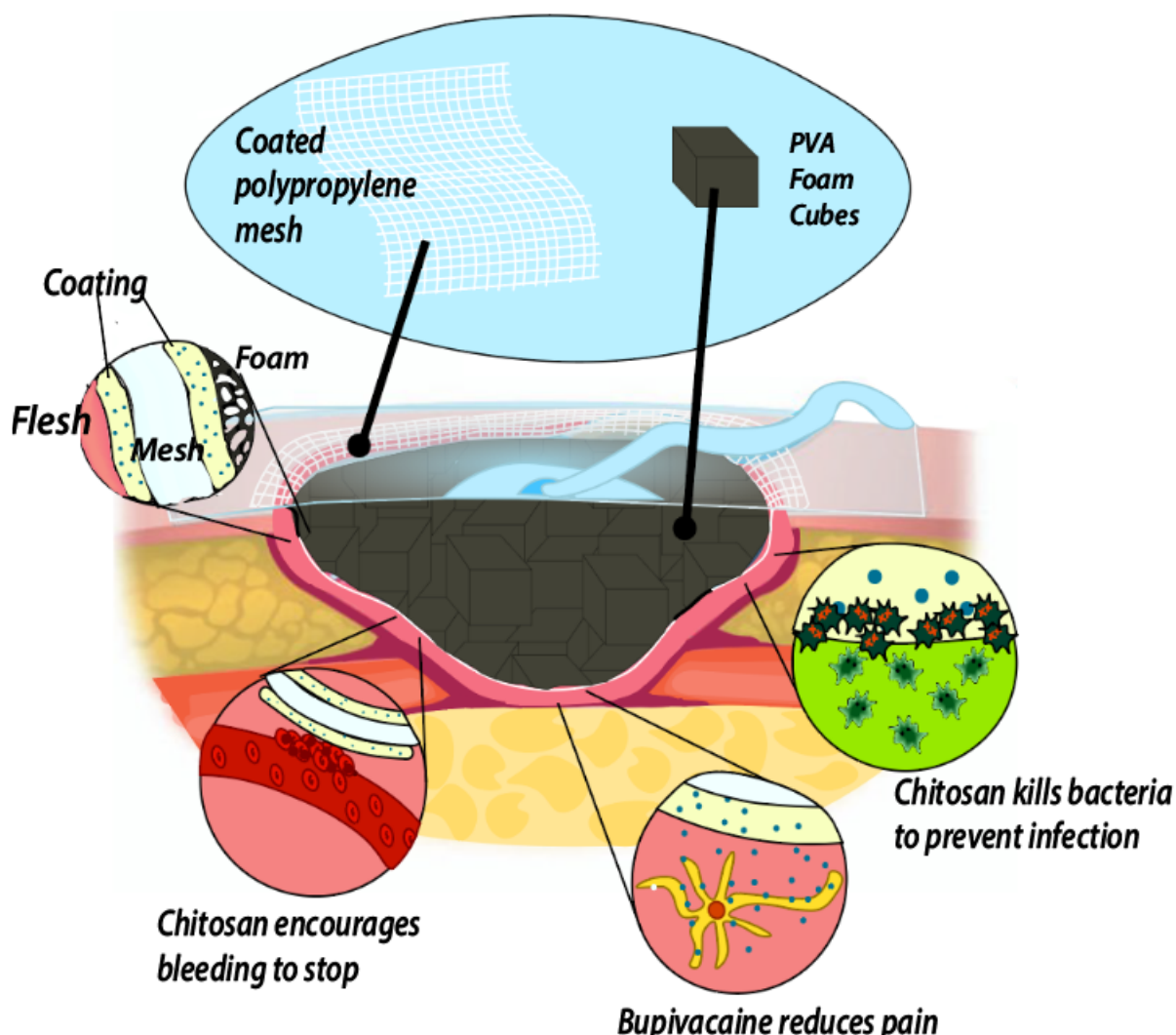




VitalMesh

A NOVEL NPWT FOAM DRESSING

VitalMesh is a wound dressing that encompasses foam to ensure removal during dressing changes.



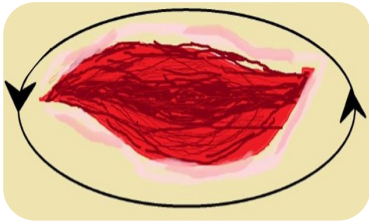
Total Worldwide NPWT Wound Care Market Revenues, 2018 - 2021

Year	Revenue (\$million)	Growth Rate %
2018	2,034	6.2%
2019	2,166	6.5%
2020	2,310	6.6%
2021	2,475	7.1%

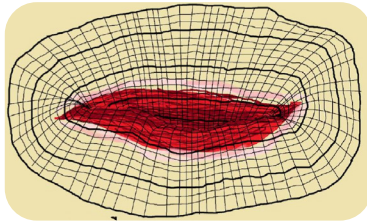
- 6% of growth in revenue the past 5 years
- US is the main consumer with market of \$1.165 billion in 2018
- *VitalMesh* expected to experience the same growth as NPWT

VitalMesh

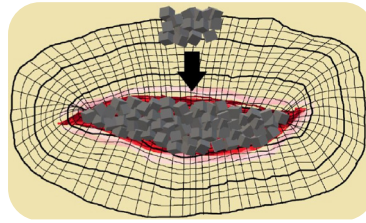
How to use *VitalMesh*:



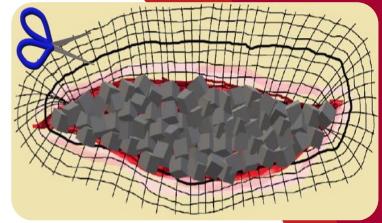
Step 1: Nurse cleans and prepares wound



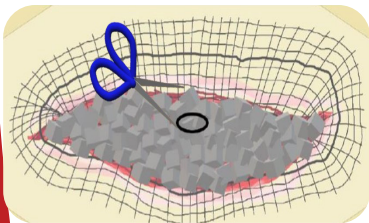
Step 2: Netting is placed into wound bed



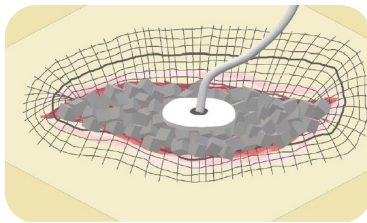
Step 3: Foam cubes fill in wound cavity



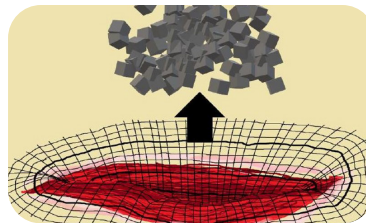
Step 4: Excess netting is cut off with scissors



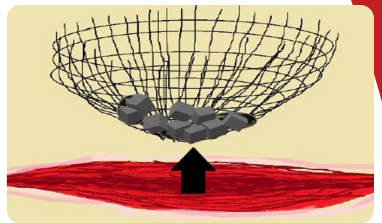
Step 5: Adhesive layer creates a seal and an access point is cut



Step 6: Track pad connects and secures the Wound VAC



Step 7: Foam is removed 2-3 days later by hand



Step 8: VitalMesh is gently removed

Netting

- 18" x 18" flexible layer
- Pore size 1/6" x 1/6"
- Standard thickness 0.0071"
- Porosity >90%
- Up to 100 hours of pain relief
- Antimicrobial coating
- Can withstand 10N of force

Foam

- 0.75" x 0.75" x 0.75" cube
- Hydrophilic
- High capillary action
- Low water absorption
- < 60% compressibility

Contact *VitalMesh*:

Kelsey Conner
Kate Magee
Rachel Moen
Shelby Strom

kconne3@clemson.edu
kgmagee@clemson.edu
rmoen@clemson.edu
sstorm@clemson.edu

803-522-0210
803-240-6250
719-290-2548
864-965-8650