

# FLEXBITE

The All-in-One Arthroscopic Biter



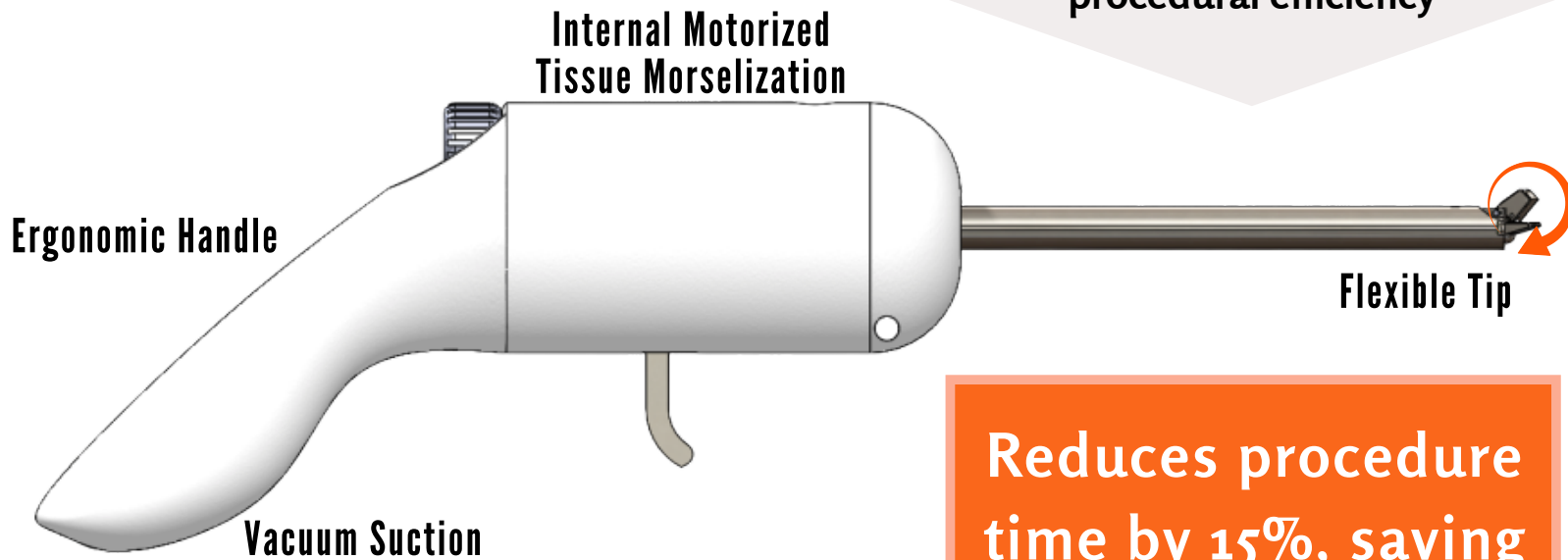
## THE PROBLEM & NEED

Instrument exchange during knee meniscectomy procedures is time and resource intensive, causing loss of potential hospital revenue.



- Procedure involves tissue resection and removal, currently achieved with multiple tools
- Difficult to maneuver in tight joint space
- Clogged instruments delay procedure

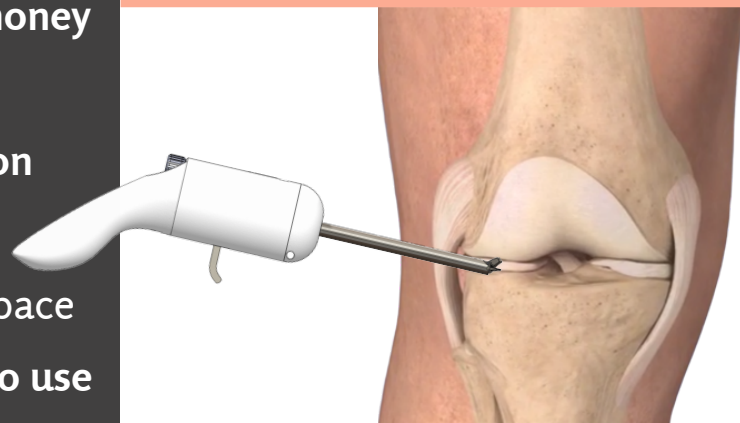
**Flexbite improves access to meniscal tissue and increases procedural efficiency**

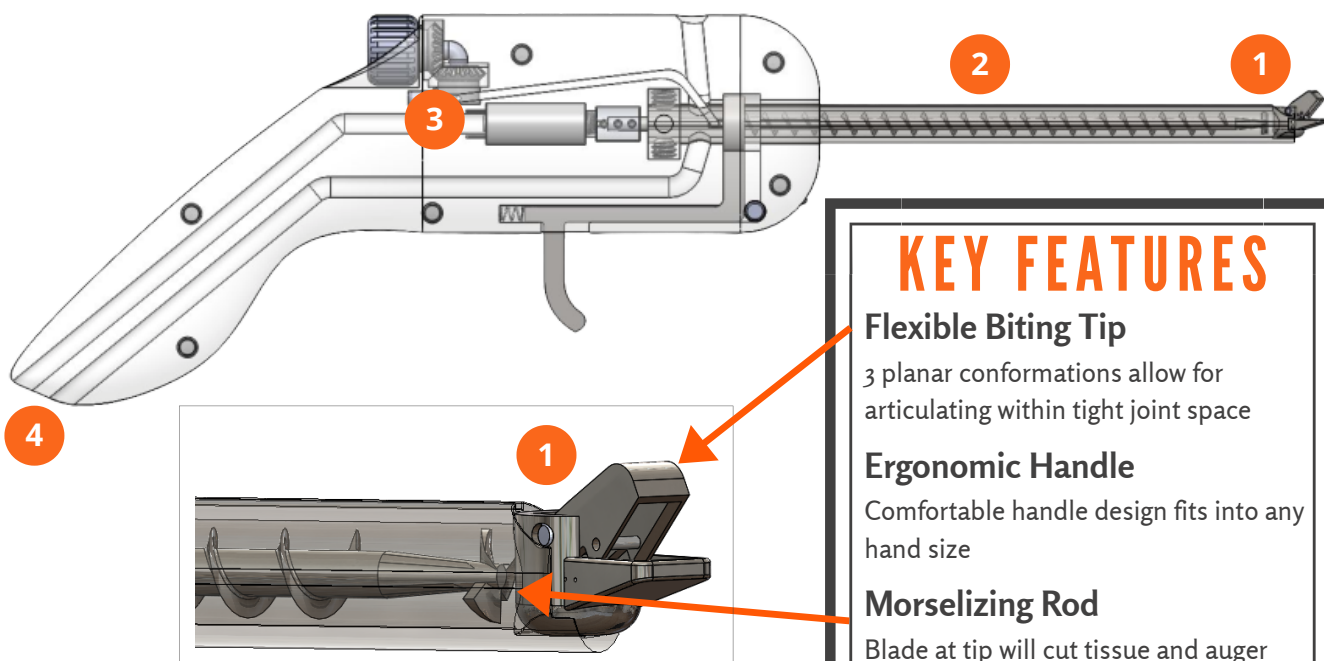
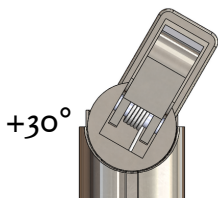
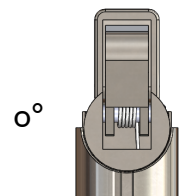
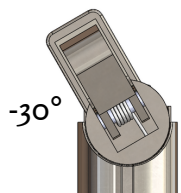


**Reduces procedure time by 15%, saving \$60,000/year**

## WHY FLEXBITE?

- Reduces procedure time, saving hospitals money
- No other product on the market that offers **simultaneous tissue resection and evacuation**
- 3 lockable conformations add **flexibility** and improve **accessibility** within the tight joint space
- Ergonomic design makes the FlexBite **easy to use**





## KEY FEATURES

### Flexible Biting Tip

3 planar conformations allow for articulating within tight joint space

### Ergonomic Handle

Comfortable handle design fits into any hand size

### Morselizing Rod

Blade at tip will cut tissue and auger design will aid in evacuating tissue from device

## TECHNICAL SPECIFICATIONS

### 1 BITING TIP

- 304 stainless steel
- 3 planar conformations at  $-30^\circ$ ,  $0^\circ$ ,  $+30^\circ$
- 3.4 x 2.25 mm cutting area

### 2 SHAFT

- 304 stainless steel
- Length of 12 cm
- Diameter of 4.75mm
- Pull wire cutouts

### 3 MOTOR

- Autoclavable
- Max continuous torque of 116.5 Nmm
- 24V input

### 4 VACUUM SUCTION

- Sealed up to 1551 kPa
- Compatible with operating room suction pumps

## MARKET

- Target market: Global Arthroscopic Tools Market
- Expected to be valued at **6.78 billion** by 2026
- CAGR of **6.3-6.6%**



Approximately 750,000 knee meniscectomy procedures are performed yearly in the US



## CONTACT BONEAFIDE SOLUTIONS

### Nathan Luzum

612-868-4354 | [nluzum@g.clemson.edu](mailto:nluzum@g.clemson.edu)

### Page Lemmon

864-553-6404 | [plemmon@g.clemson.edu](mailto:plemmon@g.clemson.edu)

### Michaela Pitcher

410-474-2178 | [mpitche@g.clemson.edu](mailto:mpitche@g.clemson.edu)

### Reed Bender

972-965-0111 | [mrhende@g.clemson.edu](mailto:mrhende@g.clemson.edu)