

Adjuncture Suture Anchor

Adjuncture is an adjustable suture anchor used in arthroscopic rotator cuff repair surgery

Need

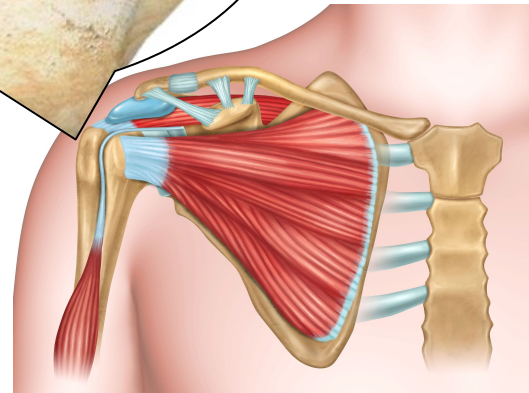
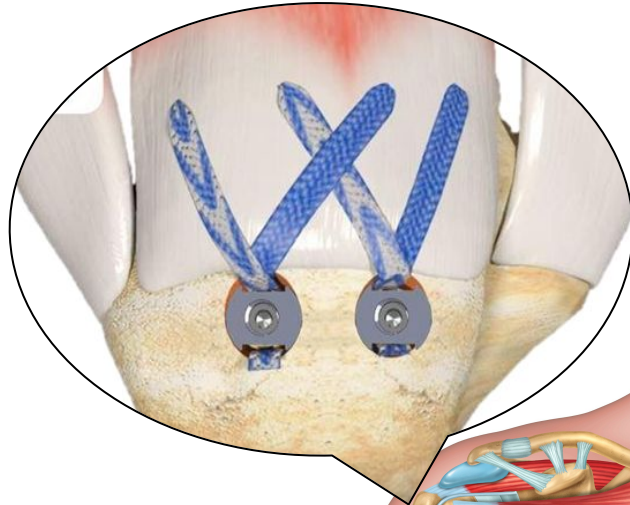
Sutures cannot be retensioned after anchor placement during rotator cuff repair procedures

Current Complications

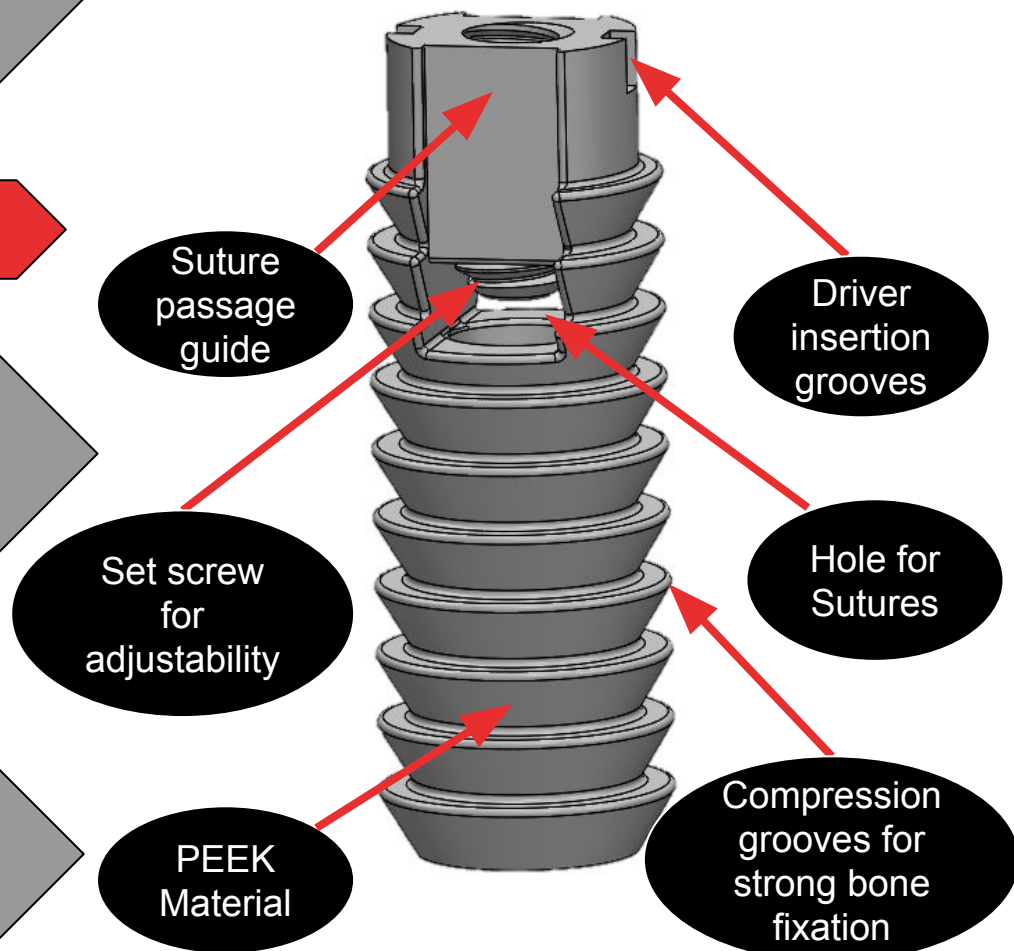
- Poor tendon- suture interface
- Reduces patient ROM
- Slack in sutures during insertion

Why Adjuncture?

- Allows for suture adjustability to enhance patient outcome



Key Features



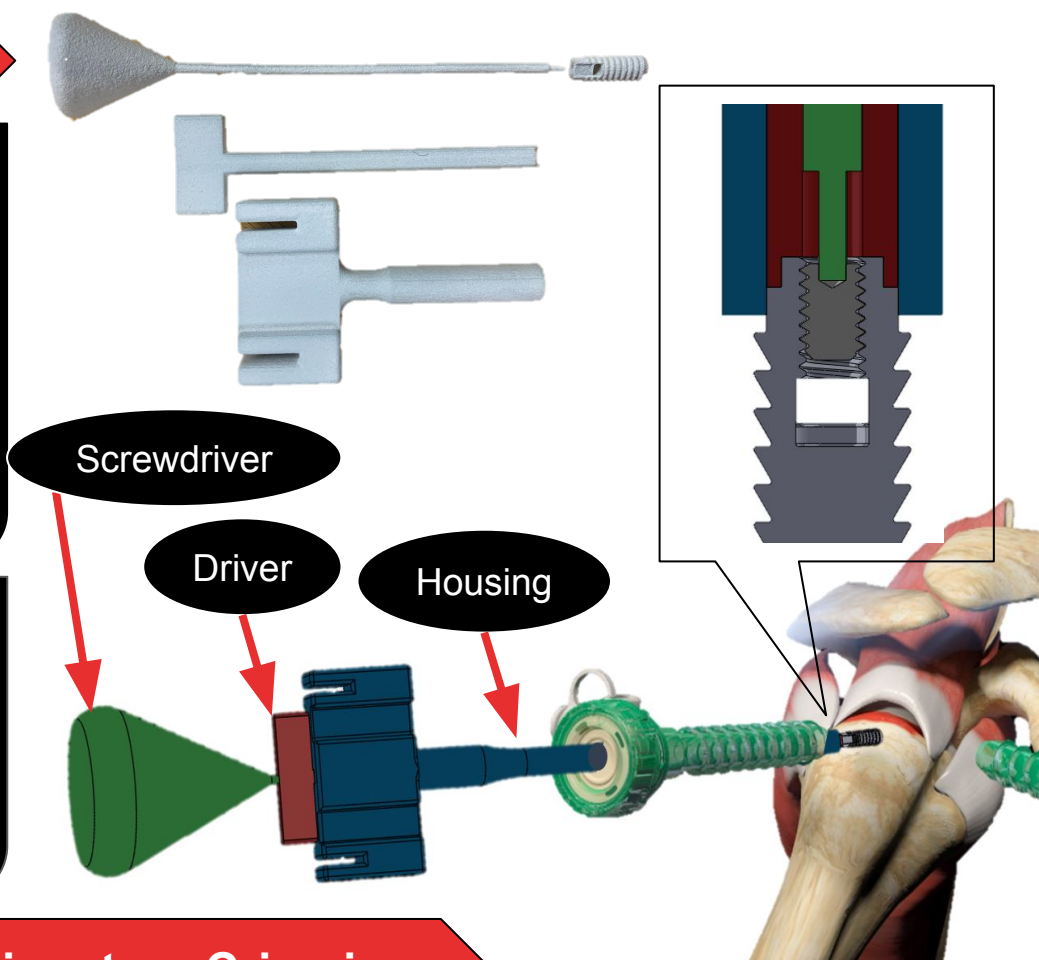
Technical Specifications and Key Features

Specifications

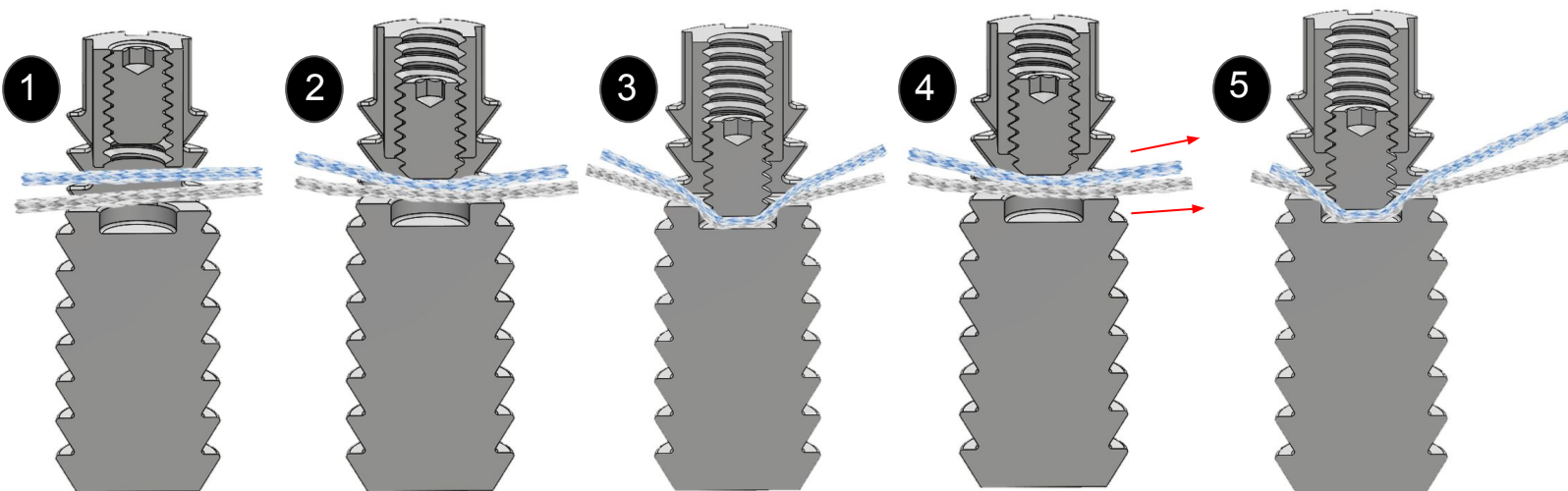
- Able to be **retensioned** post-insertion
- Used as **lateral** bone anchor in double-row repair
- Able to crimp/uncrimp at **surgeon's discretion**

Dimensions of Anchor

- Diameter: \varnothing 5.5 mm
- Depth in Bone: 15 mm
- Hole for Suture: \varnothing 2mm
- Set Screw: #2-56 thread



Cross-Section of Adjuncture Crimping



Contact Envision OrthopediX

Isabella DiCillo

440-596-9012 | idicill@clemson.edu

Trent Gillenwater

336-541-4260 | tgillen@clemson.edu

Melissa Judge

410-924-9151 | mjudge@clemson.edu

Taylor Motlong

803-361-5506 | tmotlon@clemson.edu

Wilson Sykes

864-378-3651 | jwsykes@clemson.edu

Soft Tissue Fixation Market

- Worth **\$6.7 billion** in 2015
- Expected to see a **CAGR of 9.1%** by 2025